

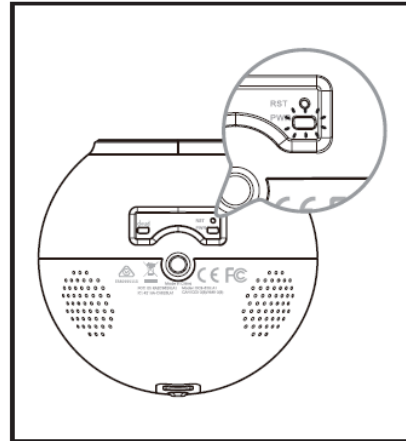
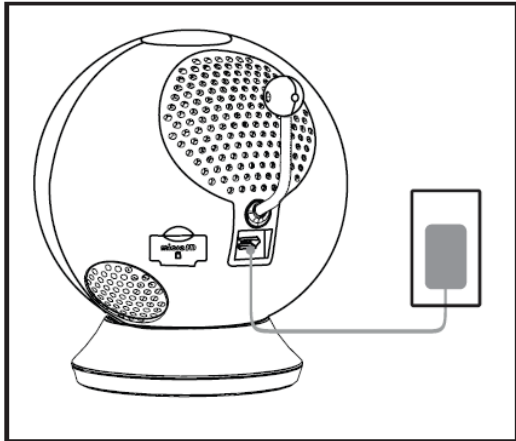
Contents

1. How do I set up and install my Baby Camera?	1
2. What are the minimum system requirements for the Baby Camera?	11
3. How can I communicate through the Baby camera using two-way audio?.....	11
4. The image is out of focus, how do I correct it?	13
5. How do I play a lullaby through the Baby camera?.....	14
6. How do I change the password on my Baby Camera?	15
3. How do I reset my camera to factory default settings?	18
4. How do I configure motion detection on my mydlink Baby Camera using the mydlink service?.....	19
5. How do I configure Sound Detection on my mydlink Baby Camera using the mydlink service?.....	24
6. How do I configure Temperature Detection on my mydlink Baby Camera using the the mydlink service?	29
7. How do I manually upgrade the firmware on my baby camera using Windows®?	34
8. How do I manually upgrade the firmware on my mydlink Baby Camera using a computer with a Mac operating system?.....	37
9. How do I mount my camera to a wall or ceiling?	39
10. How do I configure Internet Explorer® to allow ActiveX Controls?.....	40
11. How do I access my Baby camera remotely by using mydlink Web Portal?.....	42

1. How do I set up and install my Baby Camera?

Step 1: Plug in your Baby Camera and wait until the Power LED turns green.

You can use the included power adapter, or you can use a portable USB battery (not included) that can supply 5V/2A of power.



Step 2: Download the free mydlink Baby Camera Monitor app on your smartphone or tablet.

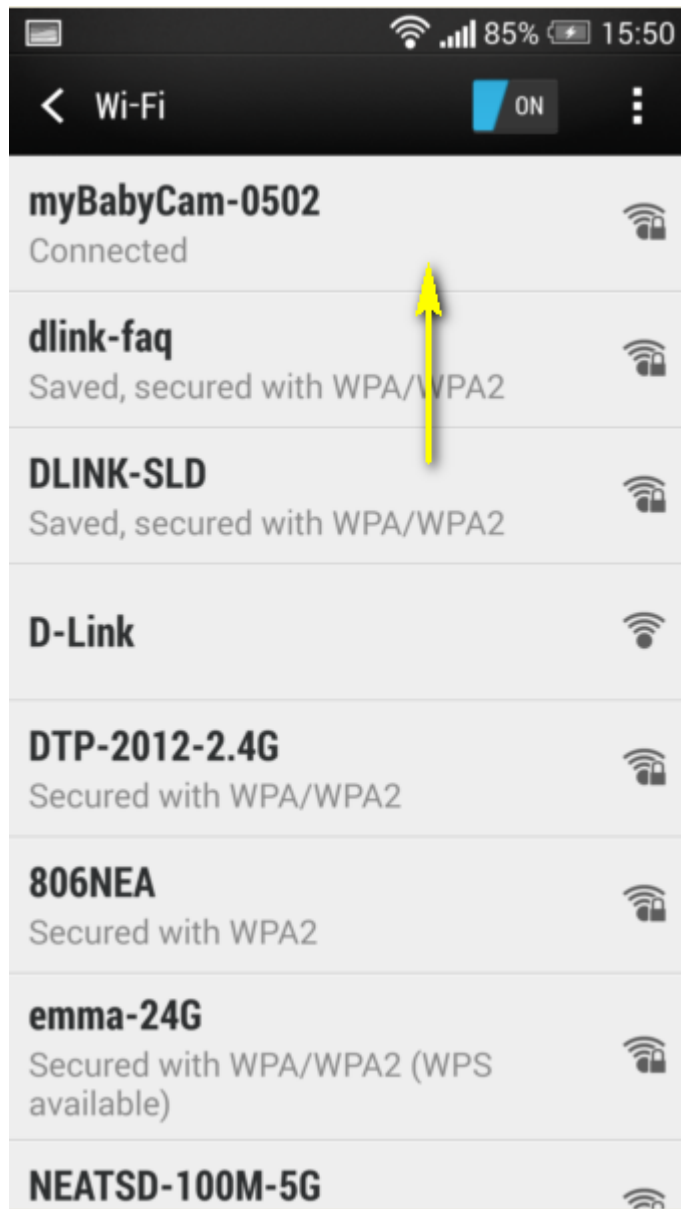


mydlink™ Baby

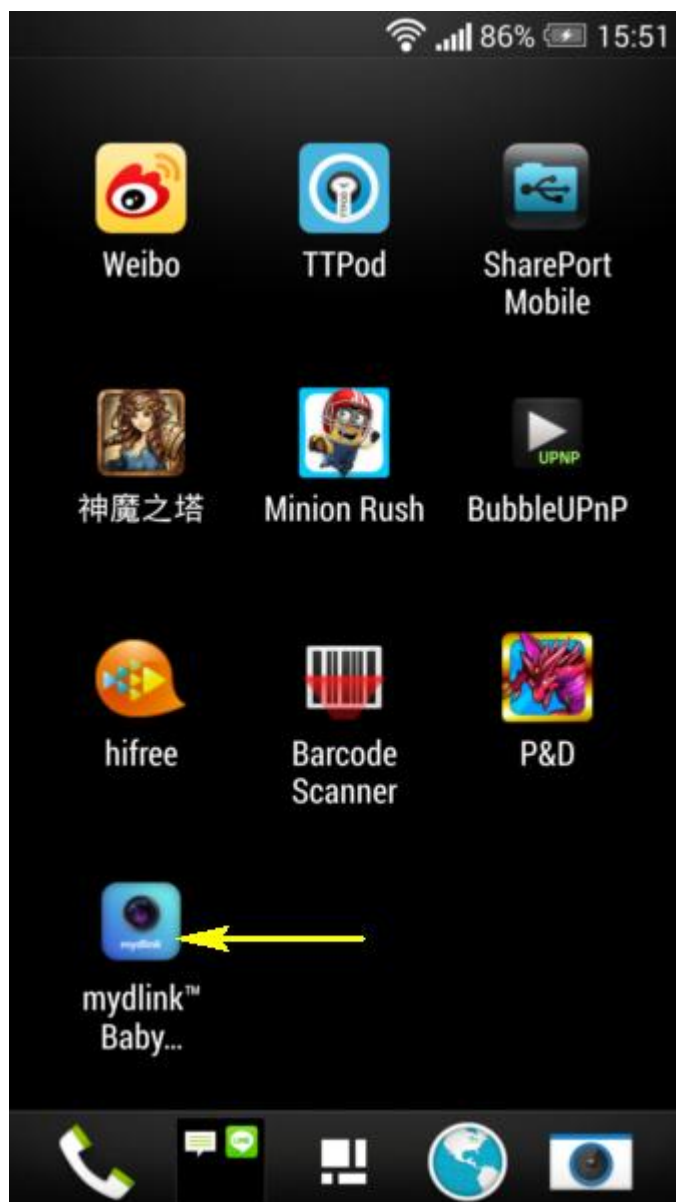
Step 3: Connect directly to the camera's Wi-Fi signal. The Wi-Fi network name and password are located on the label on the base of the unit.

iPhone/iPad: Settings > Wi-Fi Settings

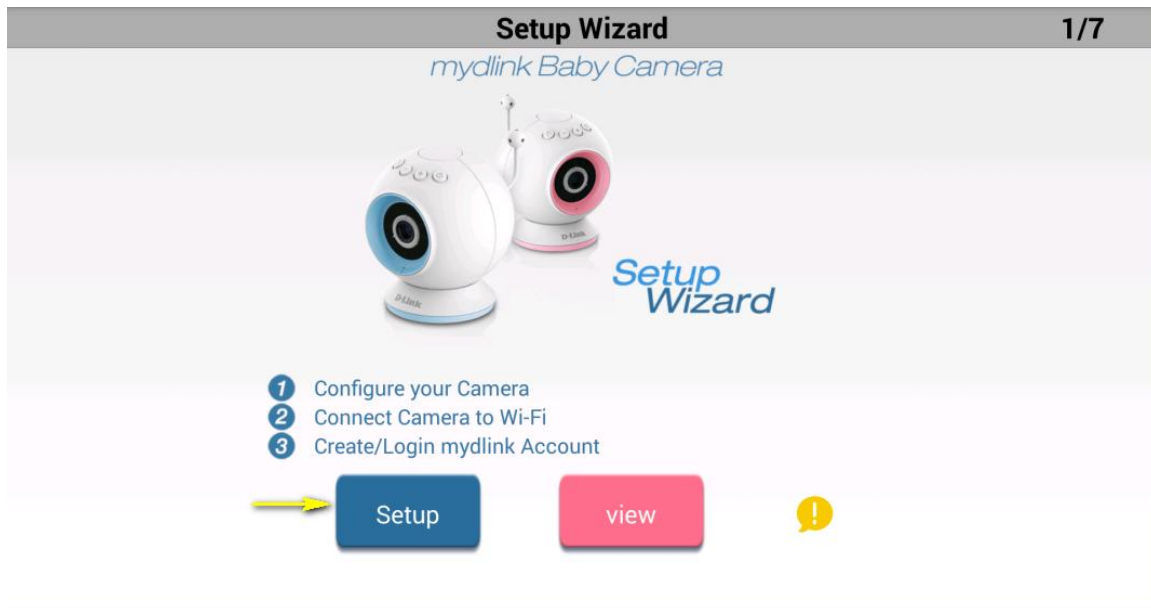
Android: Settings > Wireless & Networks > Wi-Fi Settings



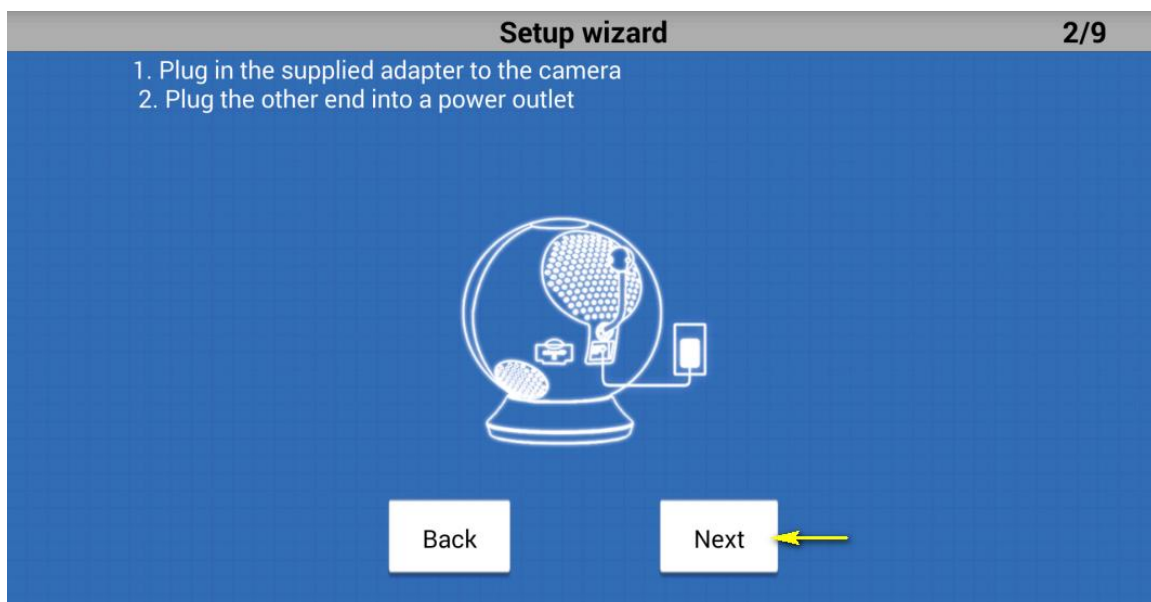
Step 3: Launch the mydlink Baby Camera Monitor app. The app will guide you through the configuration process.



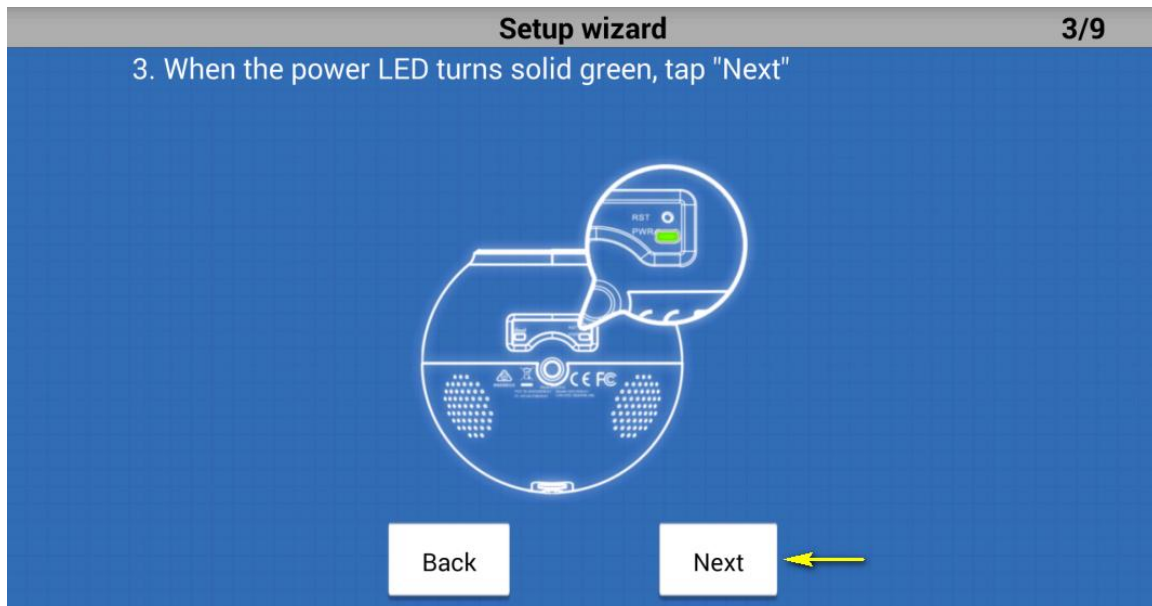
Step 4: Tap **Setup**.



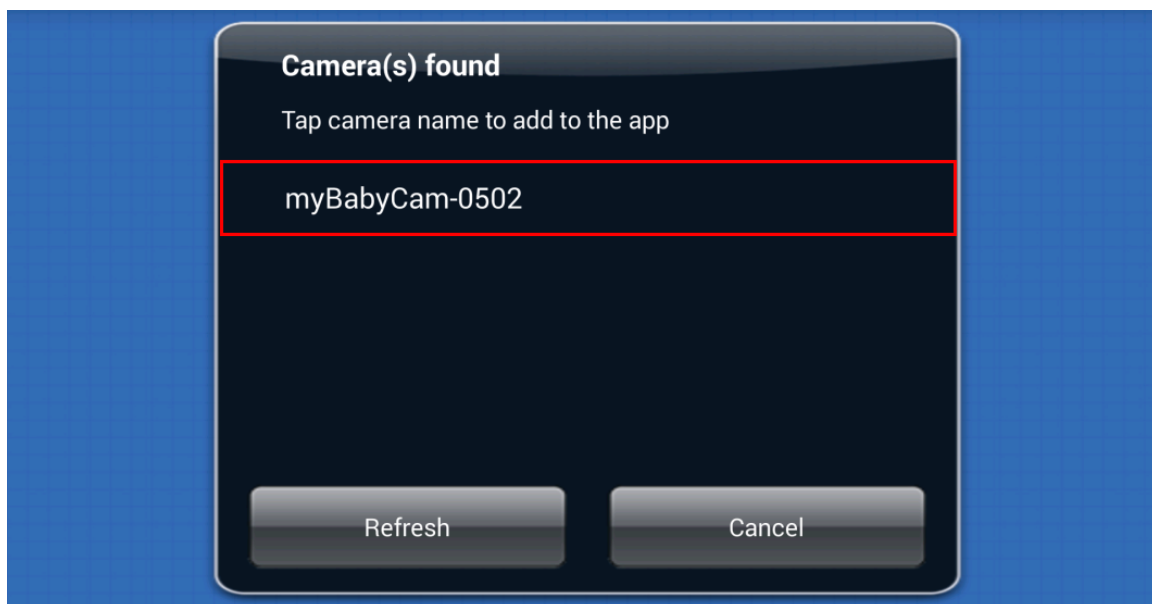
Step 5: If you have not done so already, connect the included power cable (or a USB power source) to the camera. Tap **Next**.



Setp 6: Confirm that the Power LED on the base of the unit is lit solid green. Tap **Next**.




Step 7: Tap the name of the mydlink Baby Camera which you want to set up.



Step 8: Create a name and password for your camera. If you wish to change the name of your camera, enter the new name in the Camera Name field, otherwise just leave the default name. To specify an administrator password for your camera, enter a password in the Password field, and re-enter it again in the Confirm Password field (this password is for the setup utility of the camera, and is not the same as the password for your Wi-Fi network). Tap **Next**.

Setup wizard 5/9

Create a name and password for your camera



Camera name **S-825LFAQ**

Password|

Confirm passw...|

Back

Next

Step 9: Select your home's Wi-Fi network from the list provided (you can scroll down the list if several networks are available) and enter the password for your wireless network in the Password field. You can also manually enter the name of the network you wish to connect to in the Network Name field. Tap **Connect**.

Setup wizard 6/9

Select your home's Wi-Fi network

8610_payment

mydlink_CPDDV_2.4G

dlink-faq

dlink-joe

Network name **dlink-faq**

Password

Refresh

Connect

Step 10:

- A. If you want to link your camera to the mydlink service, tap **I want to use the mydlink™ service**.

Setup wizard 7/9

The next step will link your mydlink™ Baby Camera to your mydlink™ account.

↓

I want to use the mydlink™ service

I do not want to use the free mydlink™ service

1. If you want to register your camera with your existing mydlink account, enter your email address and password in the fields provided.
2. If you don't have a mydlink account, check the **Create a new mydlink™ account** box and enter the email address and password you wish to use to create your new account. Tap **Next**.

Setup wizard 8/9

Register your camera with your existing mydlink™ account

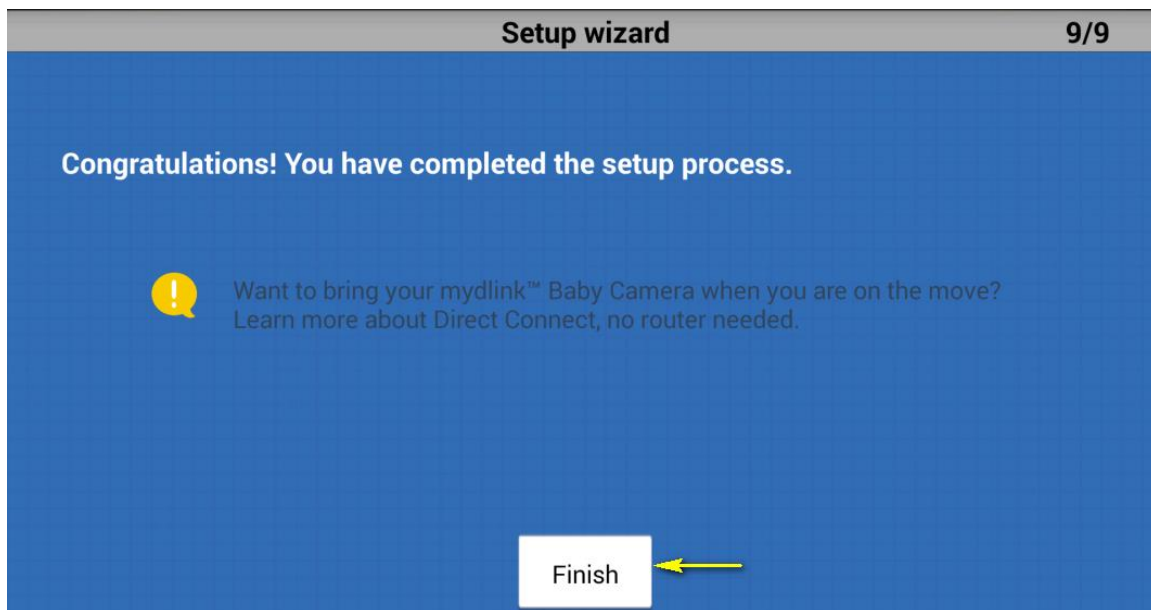
☐ ← Create a new mydlink™ account

E-mail sample@gmail.com

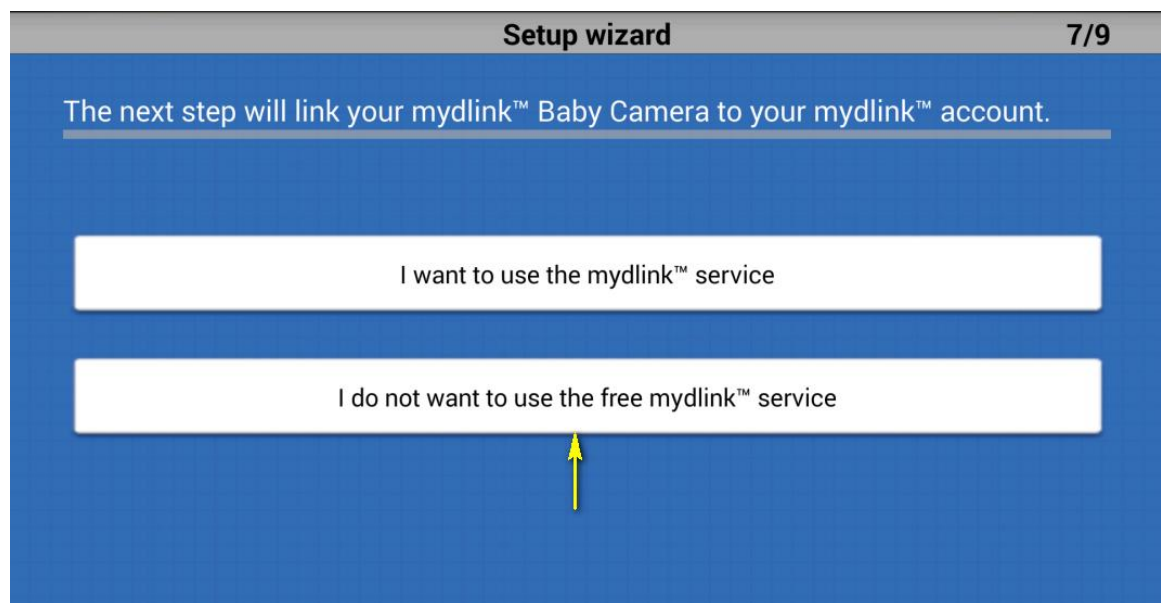
Password ••••

Back Next ←

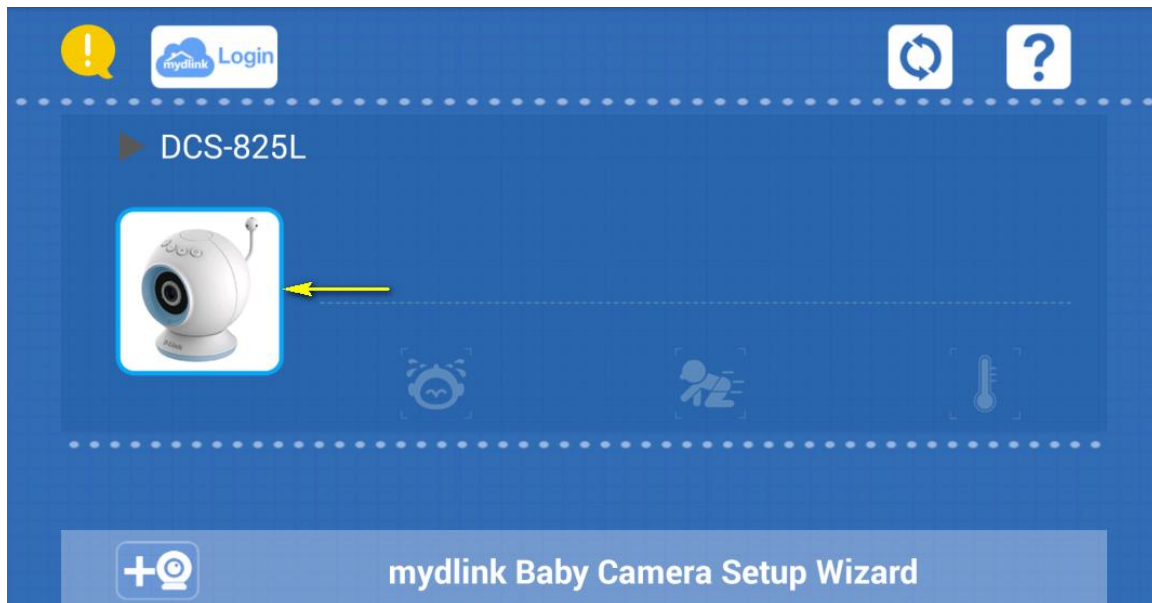
Tap **Finish**. Please continue to step 12.



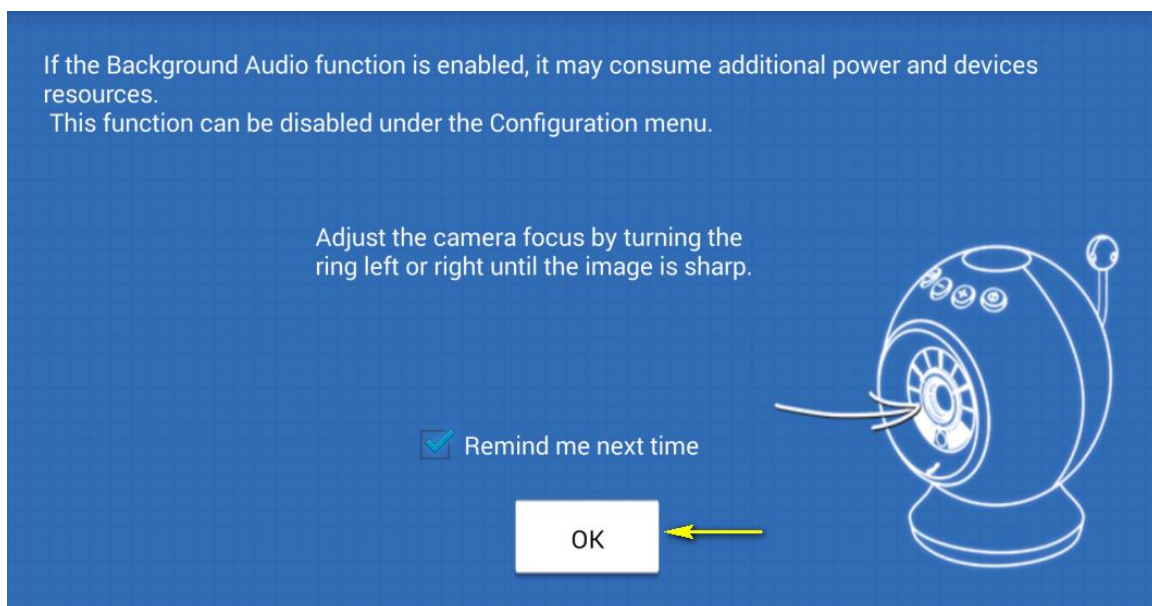
- B. If you do not wish to register your camera with the mydlink service at this time, tap **I do not want to use the free mydlink™ service**. Please note that you will not be able to view your camera's live feed remotely if you have not registered for the mydlink service.

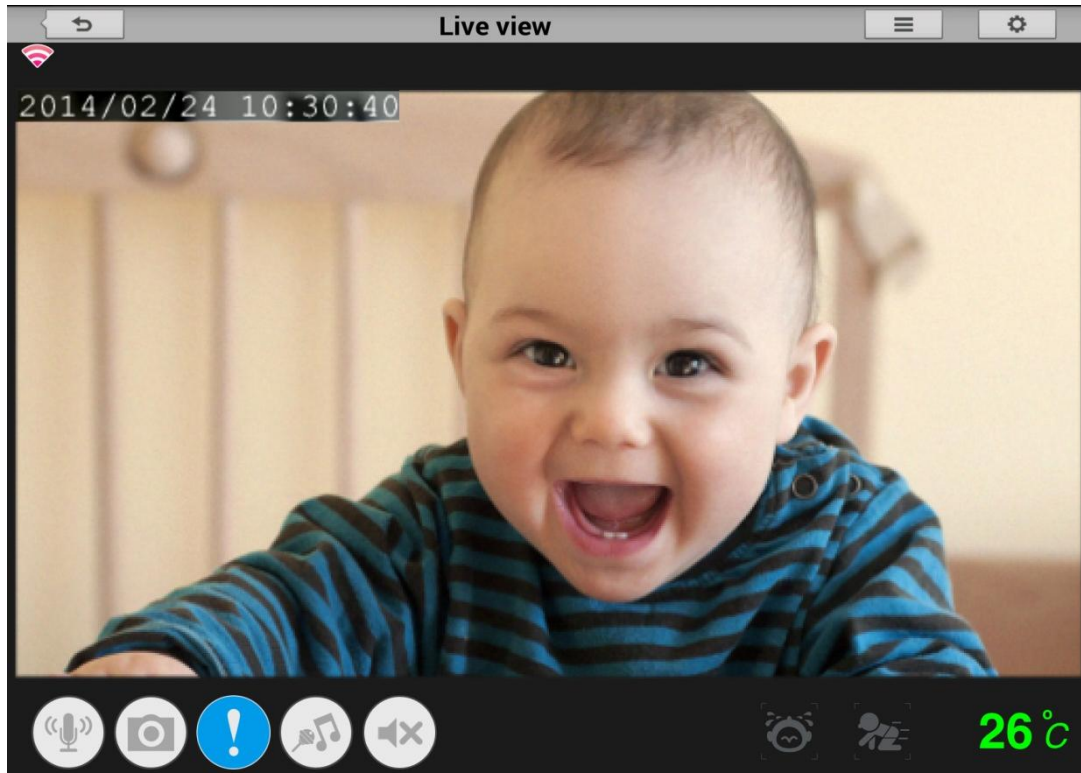


Step 12: Tap the device icon for the DCS-825L.



Step 13: Tap **OK** to continue to the live video page. Your camera's live video will appear on the following screen.





2. What are the minimum system requirements for the Baby Camera?

- Smartphone or tablet with iPhone/iPad: iOS 5.1.1 or higher; Android 4.01 or higher
- 802.11g/n Wi-Fi network (Wireless N network recommended for optimal performance)
- Internet access required for remote viewing

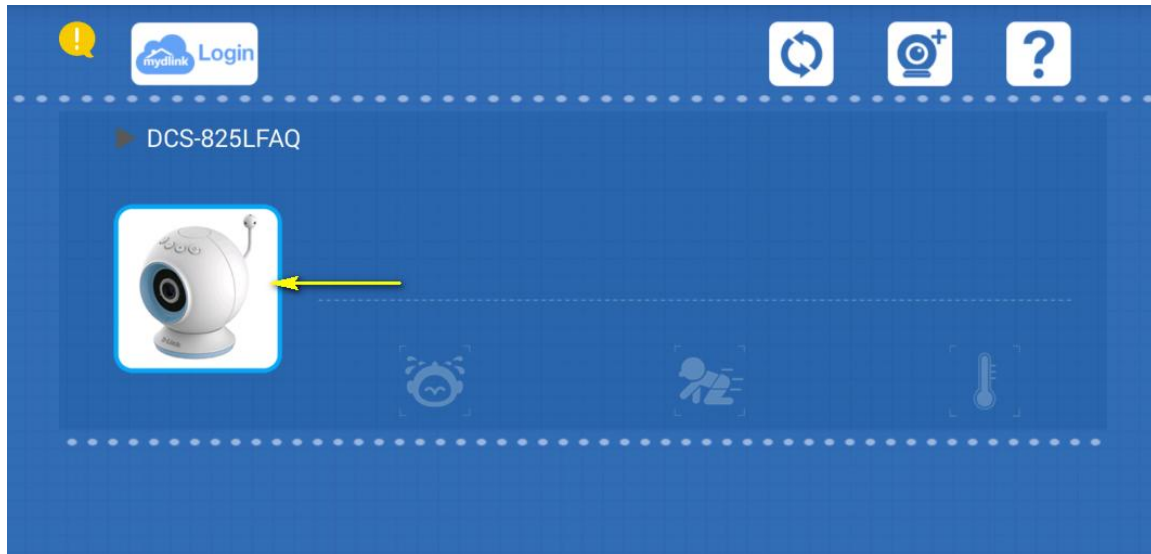
You are advised to check your mobile device operating system's application store for the most up-to-date requirements for the mydlink™ Baby Camera app.

3. How can I communicate through the Baby camera using two-way audio?

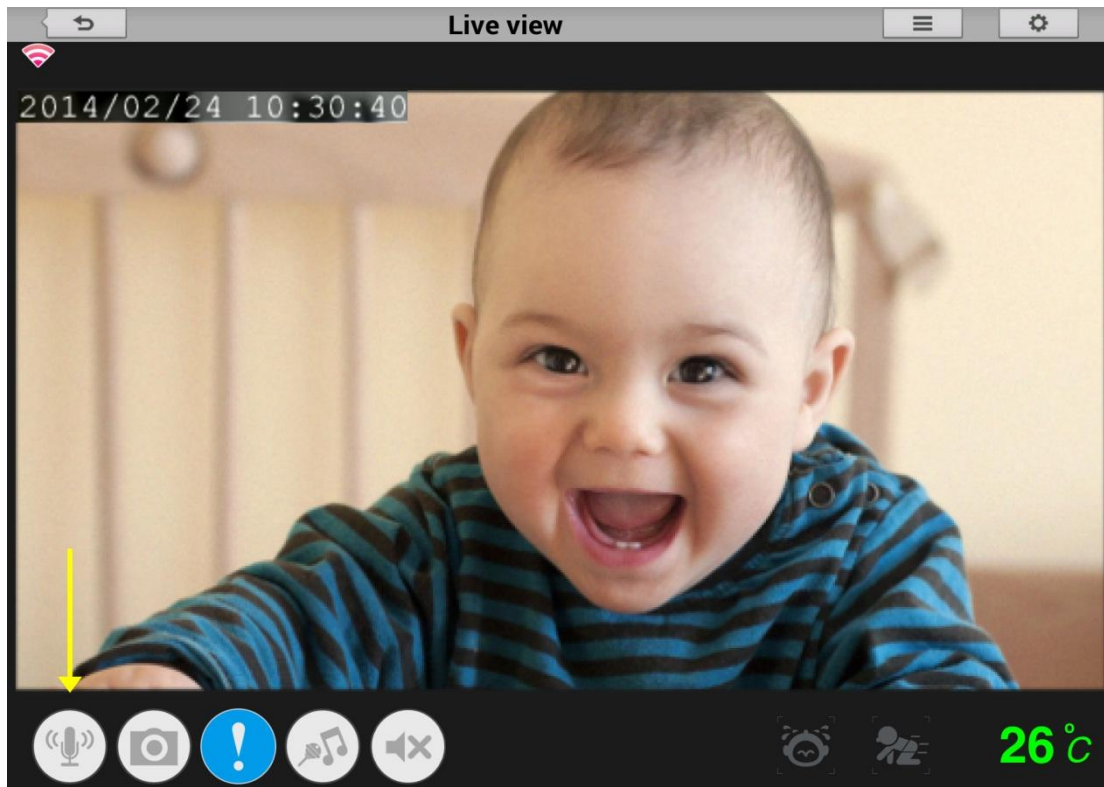
Step 1: Launch the mydlink Baby Camera app.



Step 2: Select the camera which you want to use to communicate.



Step 3: Press the microphone button on the bottom-left of the Live View screen. This will allow you to speak into the microphone of your smartphone or tablet, and the audio will be played out of the camera's speaker.



4. The image is out of focus, how do I correct it?

You can turn the white focus ring on the front of the camera to adjust the focus. Turn the ring while watching the camera's live view to fine tune the image focus.

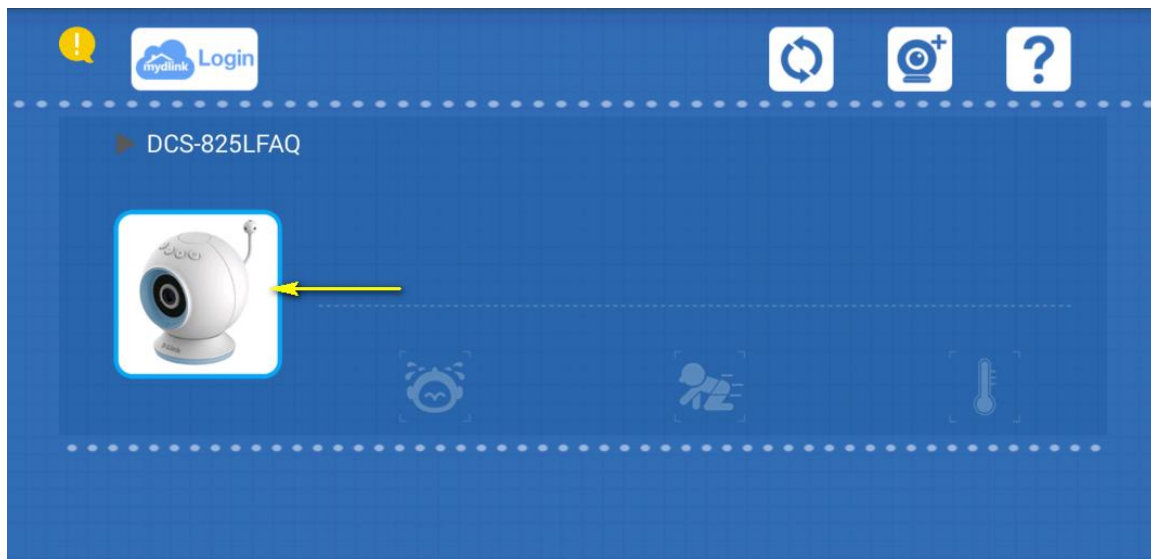


5. How do I play a lullaby through the Baby camera?

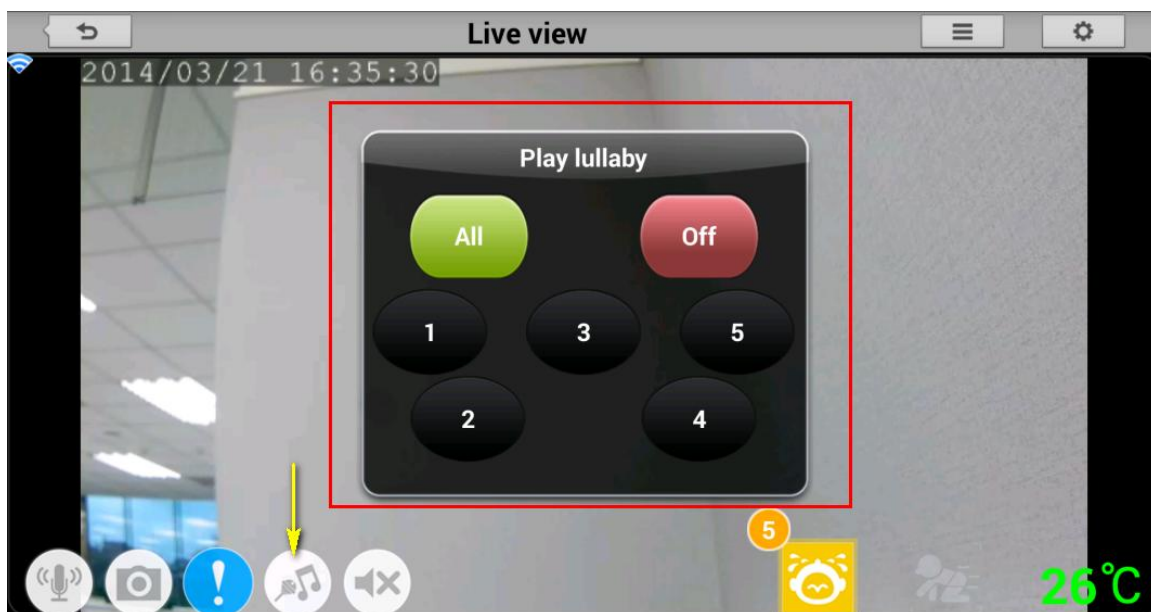
Step 1: Launch the mydlink Baby app.



Step 2: Tap the camera which you want to use to play the lullaby.



Step 3: Tap the lullaby button (found on the bottom of the Live View screen, fourth from the left). Tap buttons 1-5 to choose a specific lullaby, "ALL" to play them all in sequence, or "OFF" to stop playing a lullaby. Alternatively, press the lullaby button on top of the camera unit to toggle playing a lullaby on or off.



6. How do I change the password on my Baby Camera?

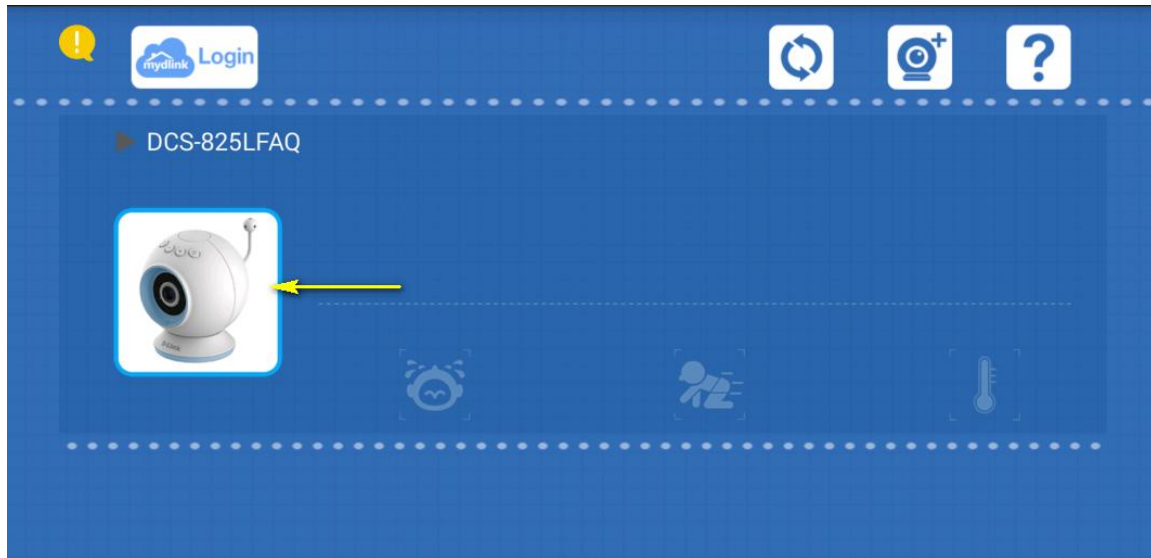
Note: mydlink Cloud Service registration requires the admin password

Step 1: Launch the mydlink Baby app.



mydlink™ Baby

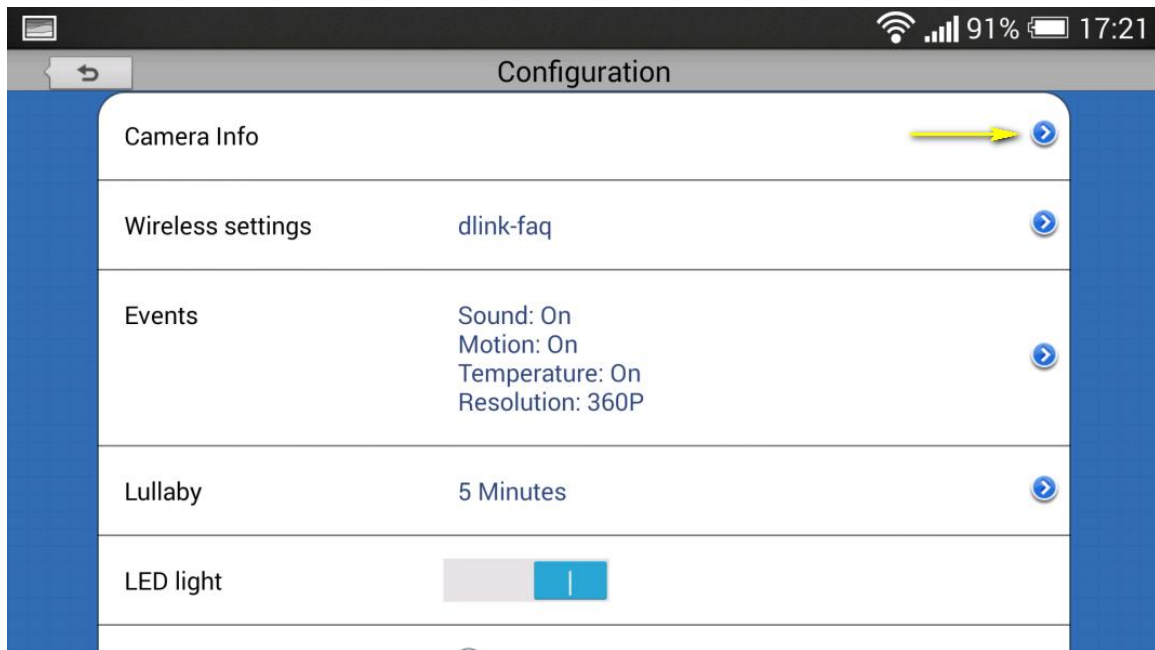
Step 2: Tap the camera which you want to change the password for.



Step 3: Tap the settings icon in the top right-hand corner of the screen.



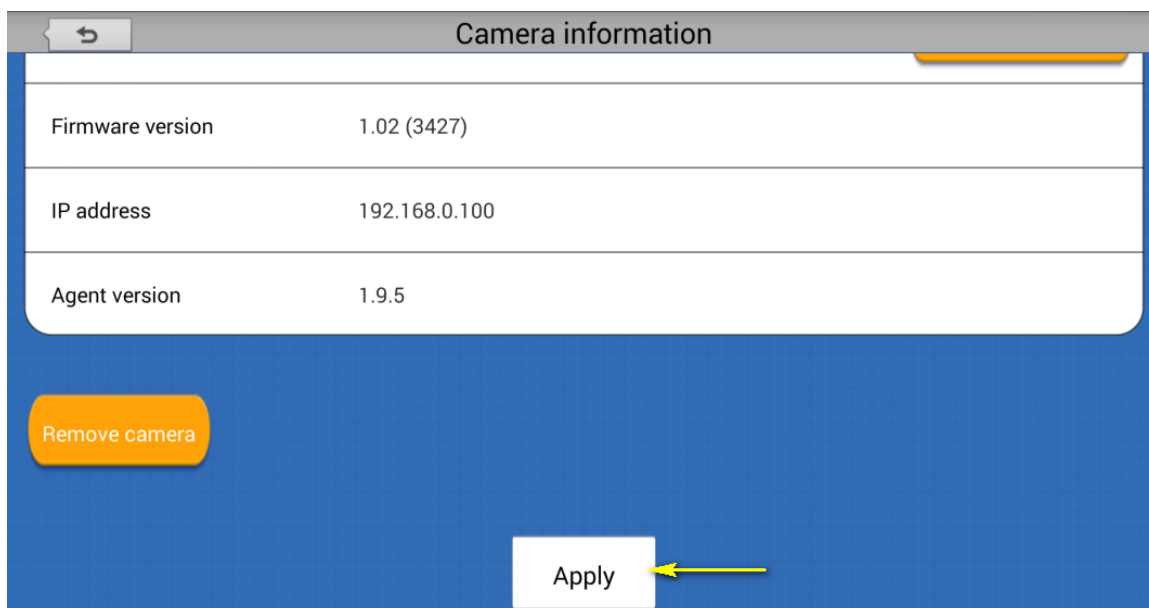
Step 4: Tap the arrow to expand the Camera Info section



Step 5: To change the administrator password, enter the existing administrator password in the Current Password field (leave blank if you have not changed it from the default), and enter a new password in the New Password field and again in the Confirm Password field.

A screenshot of a mobile application's 'Camera information' screen. The screen has a blue header bar with a back arrow and the title 'Camera information'. Below the header, there is a form with the following fields: 'Camera name' with the value 'DCS-825LFAQ', 'Camera password' section with three sub-fields: 'Current password', 'New password', and 'Confirm password'. The 'Current password' field is highlighted with a red box. All password fields contain masked characters (dots).

Step 5: Tap **Apply** to save the configuration.



3. How do I reset my camera to factory default settings?

Example:

- If you forget your camera's password, you can perform a reset to return all settings to the factory default.
- If you can't log in to the device.
- If you change your network environment.
- If you want to assign the device to another mydlink account.
- If you encounter a problem while registering the device to the mydlink service.
- If the setup wizard can't find the camera.

Note: After a factory reset you will need to re-register the camera with mydlink Cloud Services.

Warning: Do not turn off your mydlink Baby Camera during this process. It is recommended that this process is only carried out while the camera is connected directly to a power outlet using the supplied power adapter.

Step 1: With the unit on, use a paper clip to press the reset button inside the hole on the base on the unit labeled **RST**.

Step 2: Hold the button down for 10 seconds and release.



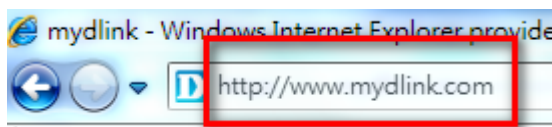
Note: Do not unplug the power adapter during this procedure.

Step 3: The unit will then reboot. Once the power light stops blinking, the unit is reset and all settings are restored to their defaults.

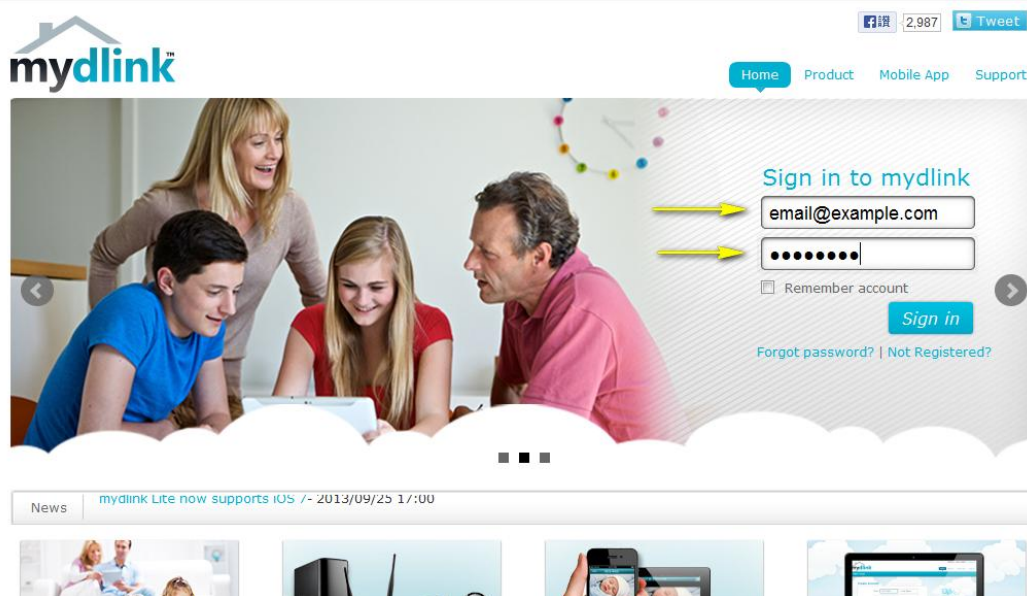
4. How do I configure motion detection on my mydlink Baby Camera using the mydlink service?

Use this process if your mydlink Baby Camera is already registered with your mydlink account.

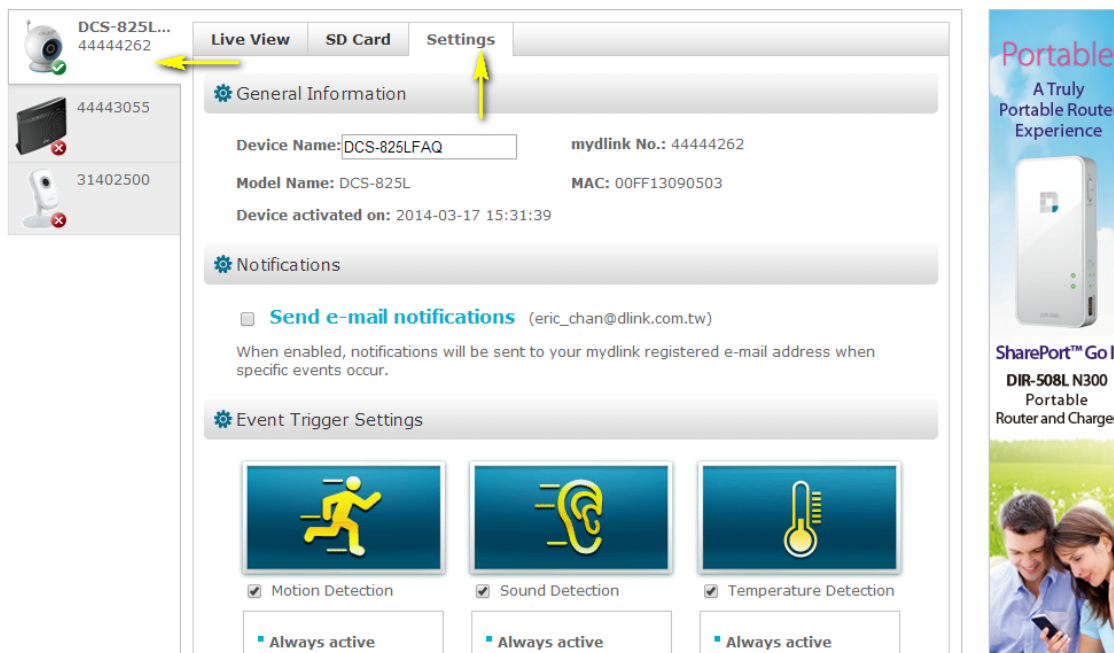
Step 1: Open your web browser and enter <http://www.mydlink.com/>




Step 2: Enter your mydlink ID (email) and password at the login screen and click **Sign in**.




Step 3: Select the camera and click on the Settings tab.




Step 4: Ensure the **Motion Detection** checkbox is checked and click the icon.

 Event Trigger Settings




☒ Motion Detection

- Always active
- PIR Sensor Enabled




☒ Sound Detection

- Always active



☒ Temperature Detection

- Always active
- Temperature Range
[23 - 29 °C]

 More Settings

☐ Turn off all camera LED lights.

You can remove your **DCS-825LFAQ** from your account by clicking the **Remove Device** button.

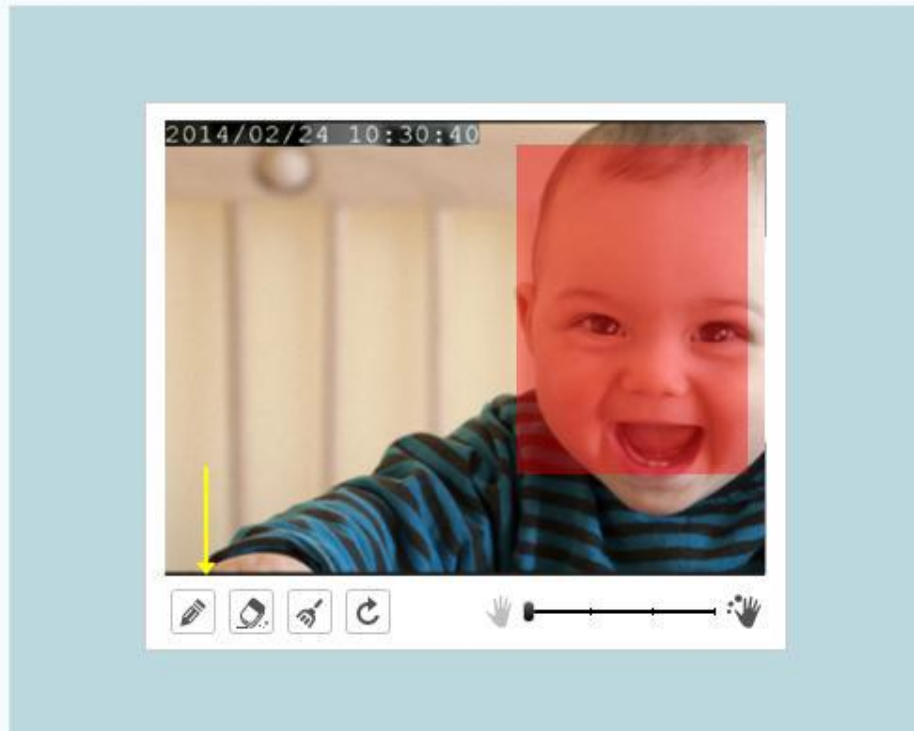
Step 5: Select the detection area and sensitivity you would like using the drawing tools. Click **Next** to continue.

Motion Detection



1 Define detection area

Draw the areas you want to monitor for movement using the pencil and eraser tools.



1

2

Next



Step 6: Click **Finish** to confirm the motion detection settings.

Motion Detection

2

Summary

Active

1. Define Detection Area

Motion detection area set, detection sensitivity is 0%, PIR sensor enabled

*After confirming your settings, click Finish to go back to the Settings page, then click the Save button.

1

2

Finish

Step 7: Click **Save** to save the current configuration.

☒ Motion Detection

- Always active
- PIR Sensor Enabled

☒ Sound Detection

- Always active

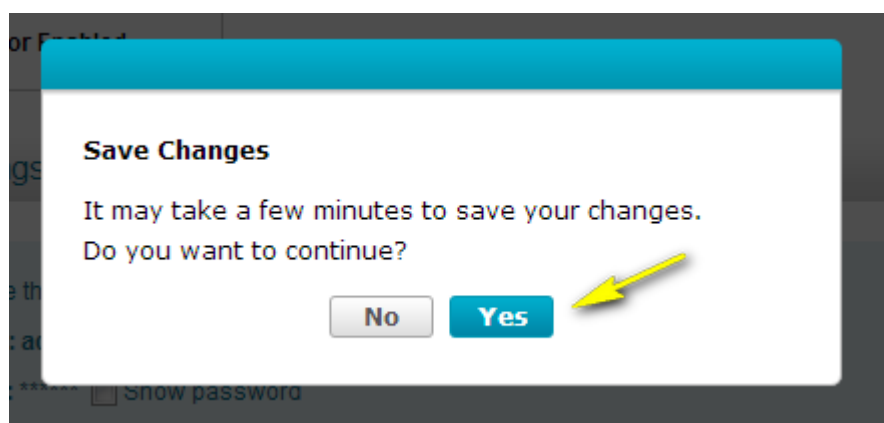
☒ Temperature Detection

- Always active
- Temperature Range [23 - 29 °C]

☐ Turn off all camera LED lights.

You can remove your **DCS-825LFAQ** from your account by clicking the **Remove Device** button.

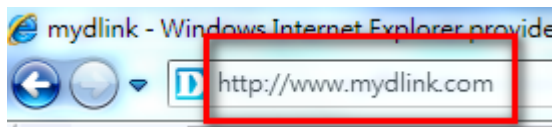
Step 7: Click **Yes** to confirm changes.



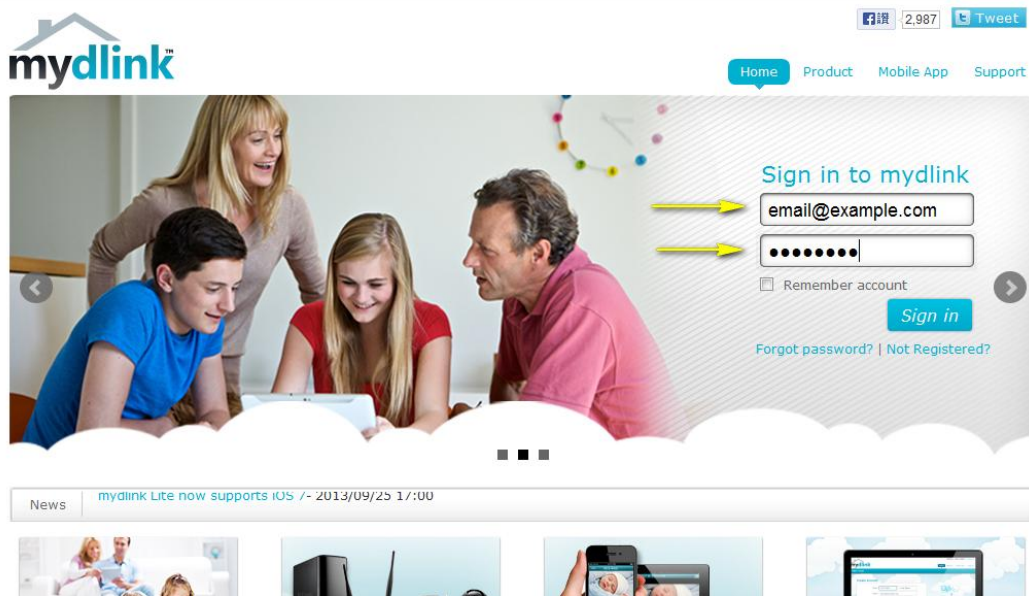
5. How do I configure Sound Detection on my mydlink Baby Camera using the mydlink service?

To be used if your mydlink Baby Camera is already registered with the mydlink Cloud Service.

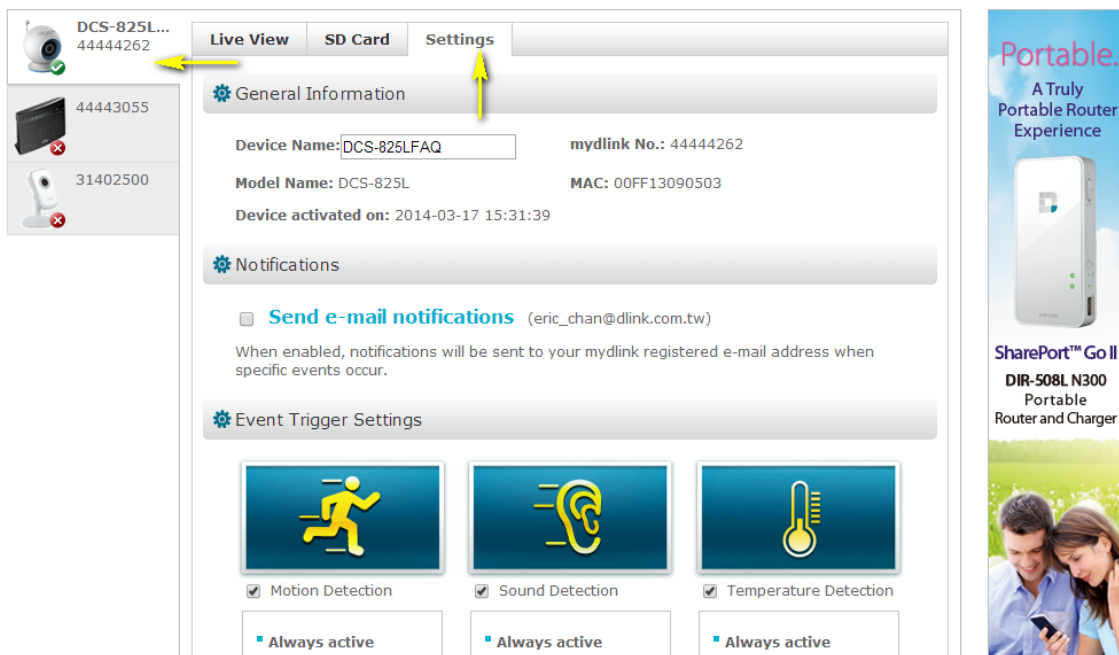
Step 1: Open your web browser and enter <http://www.mydlink.com/>



Step 2: Enter your mydlink ID (email) and password at the login screen and click **Sign in**.



Step 3: Select the camera and click on the Settings tab.






Step 4: Ensure that the Sound Detection checkbox is checked and click the icon.

☐ **Send e-mail notifications** (eric_chan@dlink.com.tw)

When enabled, notifications will be sent to your mydlink registered e-mail address when specific events occur.

Event Trigger Settings

		
<input checked="" type="checkbox"/> Motion Detection	<input checked="" type="checkbox"/> Sound Detection	<input checked="" type="checkbox"/> Temperature Detection
<ul style="list-style-type: none">■ Always active■ PIR Sensor Enabled	<ul style="list-style-type: none">■ Always active	<ul style="list-style-type: none">■ Always active■ Temperature Range [23 - 29 °C]

More Settings

☐ Turn off all camera LED lights.

Step 5: The graph shows the current volume in the device's environment. Click and drag the blue tab to move the level bar and define a volume detection threshold for sound detection. Click **Next** to continue.

Sound Detection



1 Define detection level

This shows the current volume in the device's environment. Use the level bar to define a volume level to detect for.



1

2

Next



Step 6: Click **Finish** to confirm motion detection settings.

Sound Detection

2

Summary

Active

1. Define Detection level

Sound will be detected if volume exceeds 70 dB

*After confirming your settings, click Finish to go back to the Settings page, then click the Save button.

1

2

Finish

Step 7: Click **Save** to save the current configuration.

☒ Motion Detection

- Always active
- PIR Sensor Enabled

☒ Sound Detection

- Always active

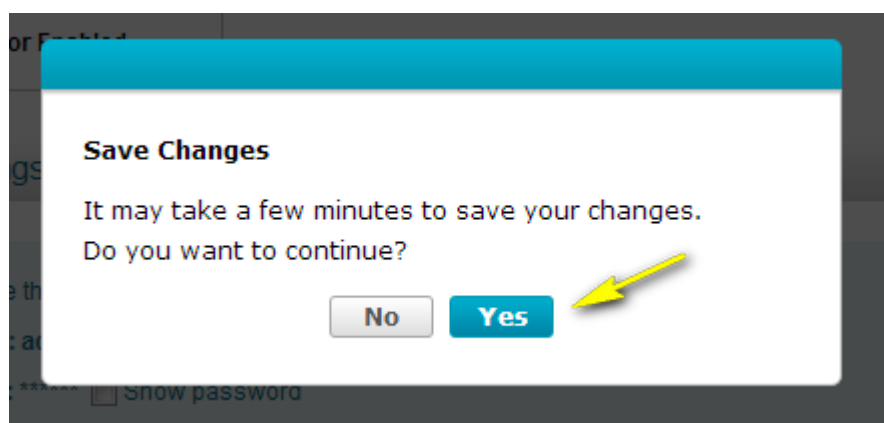
☒ Temperature Detection

- Always active
- Temperature Range [23 - 29 °C]

☐ Turn off all camera LED lights.

You can remove your **DCS-825LFAQ** from your account by clicking the **Remove Device** button.

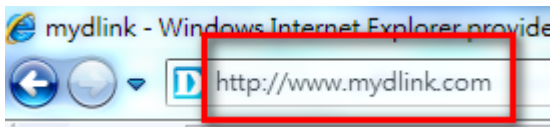
Step 7: Click **Yes** to confirm saving changes.



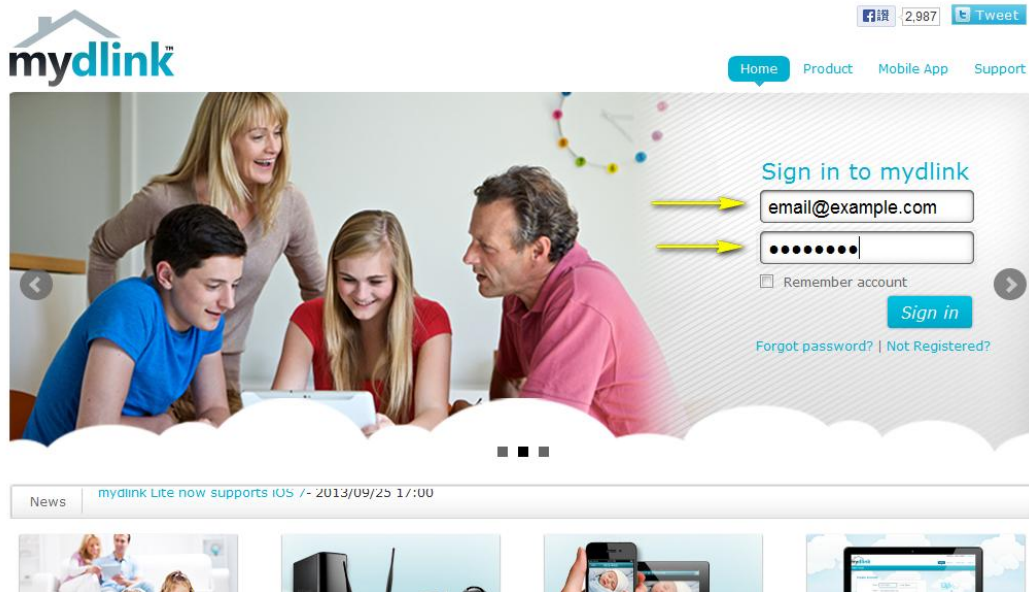
6. How do I configure Temperature Detection on my mydlink Baby Camera using the the mydlink service?

To be used if your mydlink Baby Camera is already registered with the mydlink Cloud Service.

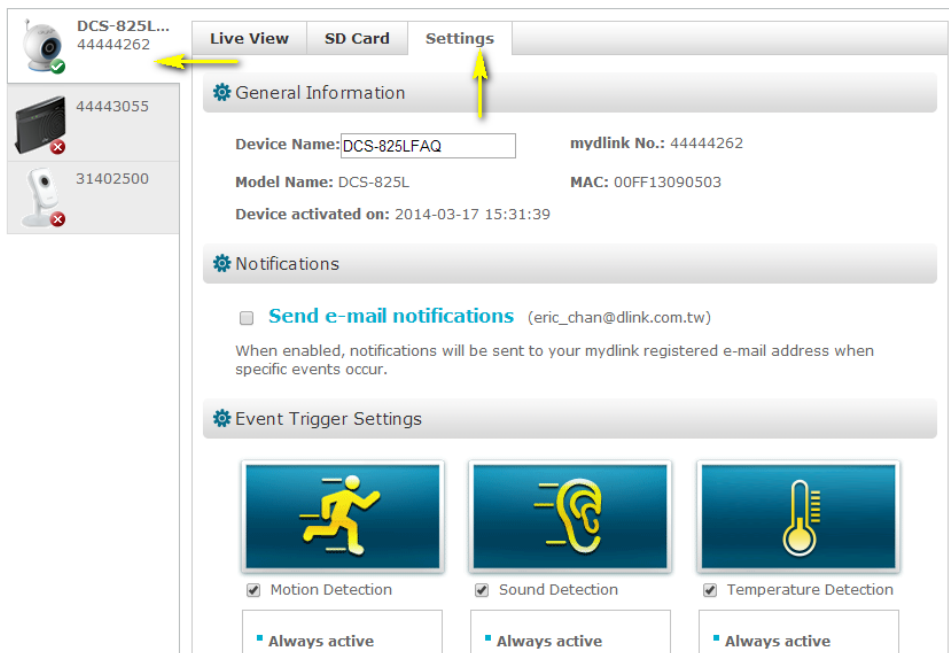
Step 1: Open your web browser and enter <http://www.mylink.com/>



Step 2: Enter your mydlink ID (email) and password at the login screen and click **Sign in**.





Step 3: Select the camera and click on the Settings tab.




Step 4: Ensure that the Temperature Detection checkbox is checked and click the icon.

specific events occur.


 Event Trigger Settings


☒ Motion Detection


- Always active
- PIR Sensor Enabled


☒ Sound Detection

- Always active


☒ Temperature Detection

- Always active
- Temperature Range
[23 - 29 °C]

 More Settings

☐ Turn off all camera LED lights.

You can remove your **DCS-825LFAQ** from your account by clicking the **Remove Device** button.

Remove Device

Step 5: Click and drag the sliders to set the range of acceptable temperatures. You can change between Celsius and Fahrenheit by clicking on the degree symbol on the right side. Click **Next** to continue.

Temperature Detection

1


Set Temperature Range

Set the range of acceptable temperatures. You can change between Celsius and Fahrenheit by clicking on the letter on the right side.

Temperature :

23 - 29

°C



The temperature icon in the Live View will turn red if the room is too hot, blue if the room is too cold, and green when the temperature is inside the range you specified.

1

2

Next

Step 6: Click **Finish** to confirm temperature detection settings.

Temperature Detection

2

Summary

Active

1. Temperature Range

Your temperature range is set to 23 - 29 °C.

If you would like to receive e-mail notifications about temperature changes, make sure "Send e-mail notifications" is enabled on the Settings page.

*After confirming your settings, click Finish to go back to the Settings page, then click the Save button.

1

2

Finish

Step 7: Click **Save** to save the current configuration.

☒ Motion Detection

- Always active
- PIR Sensor Enabled

☒ Sound Detection

- Always active

☒ Temperature Detection

- Always active
- Temperature Range [23 - 29 °C]

⚙ More Settings

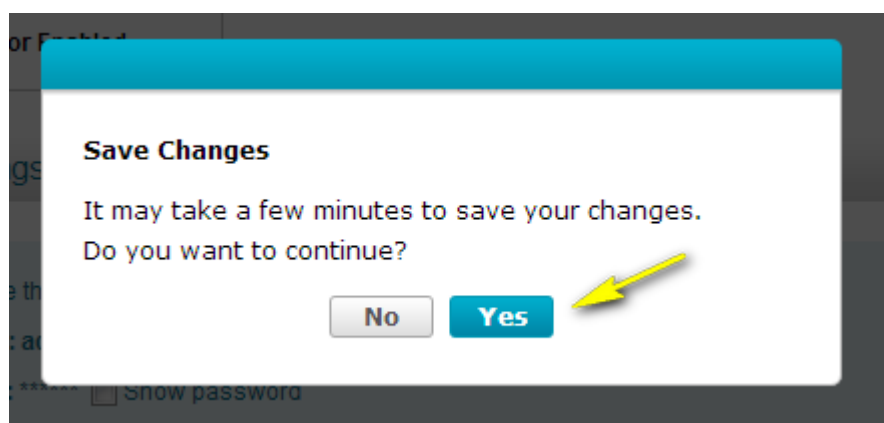
☐ Turn off all camera LED lights.

You can remove your **DCS-825LFAQ** from your account by clicking the **Remove Device** button.

[Remove Device](#)

[Cancel](#) [Save](#)

Step 7: Click **Yes** to confirm saving changes.

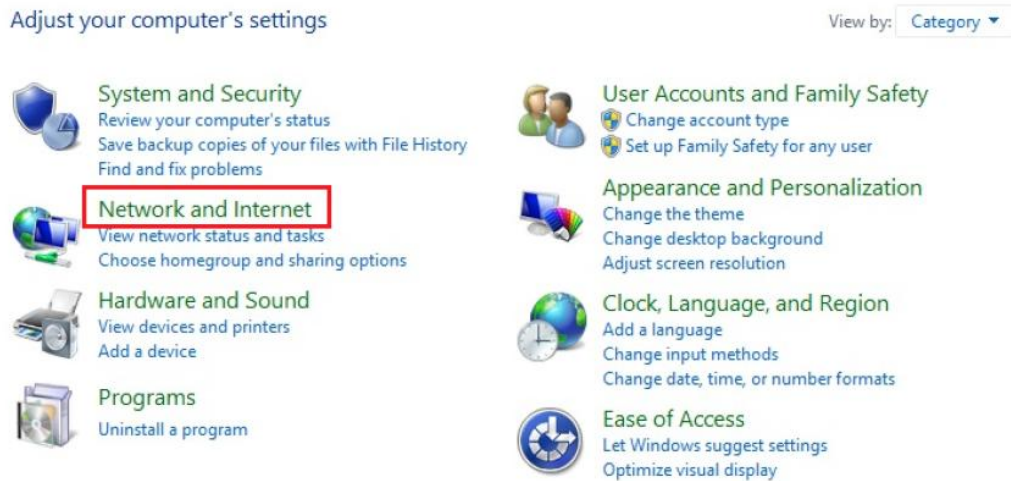


7. How do I manually upgrade the firmware on my baby camera using Windows®?

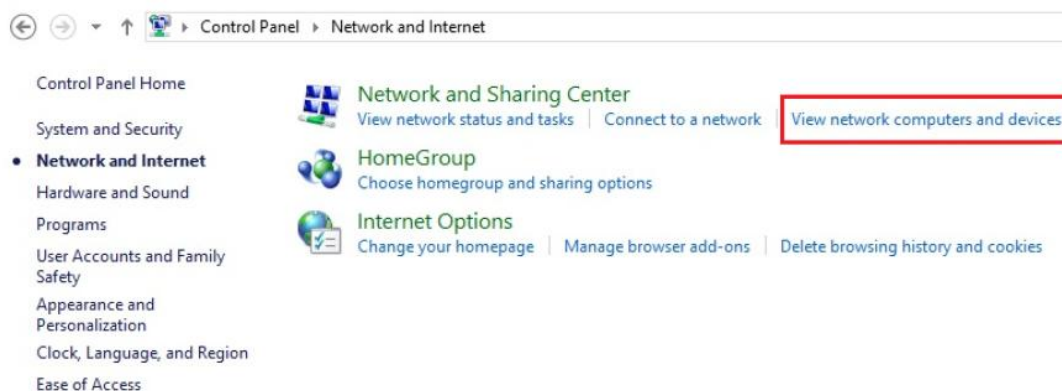
Note: Before carrying out this procedure, please ensure that the computer you are using is

connected to the same wireless network as your mydlink Baby Camera.

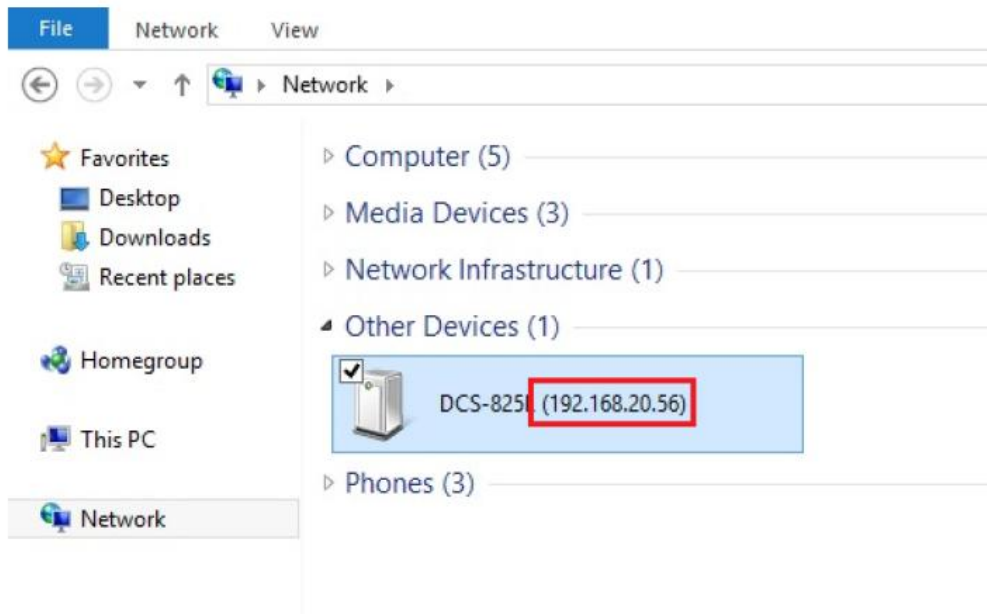
Step 1: In the Control Panel, click **Network and Internet**.



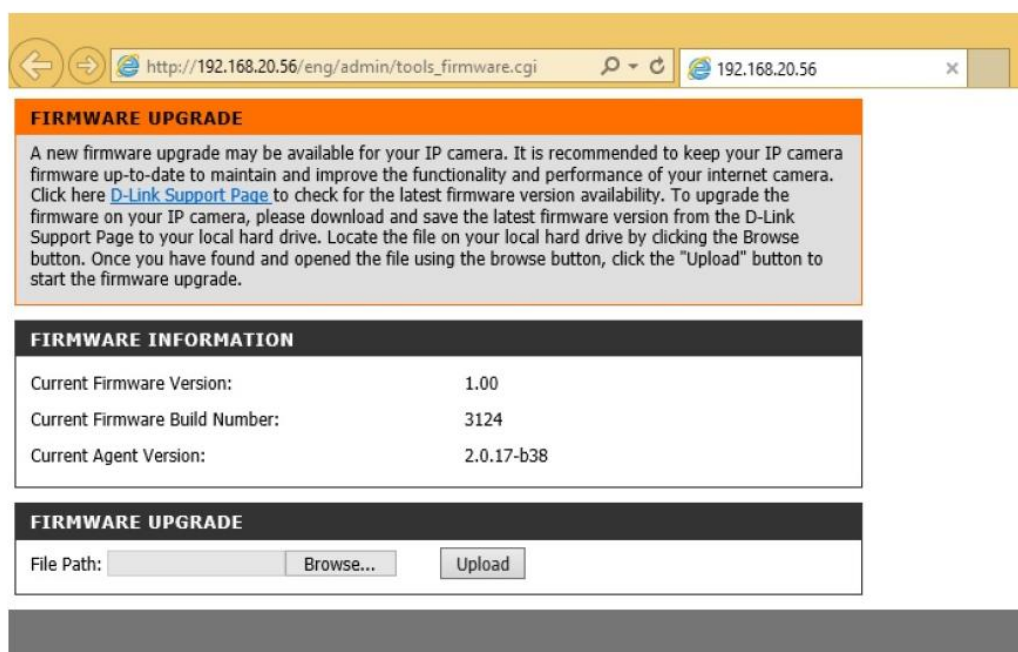
Step 2: Click **View network computers and devices**.



Step 3: Make a note of the camera's IP address.



Step 4: Open a web browser and enter “http://IP_Address/eng/admin/tools_firmware.cgi” in the address bar (where **IP_Address** is the IP address you made a note of in Step 3). eg: http://192.168.20.56/eng/admin/tools_firmware.cgi



Step 5: If you do not already have the firmware file to use, follow the instructions on this page to download the latest file from the D-Link Support Page. Then click the **Browse...**

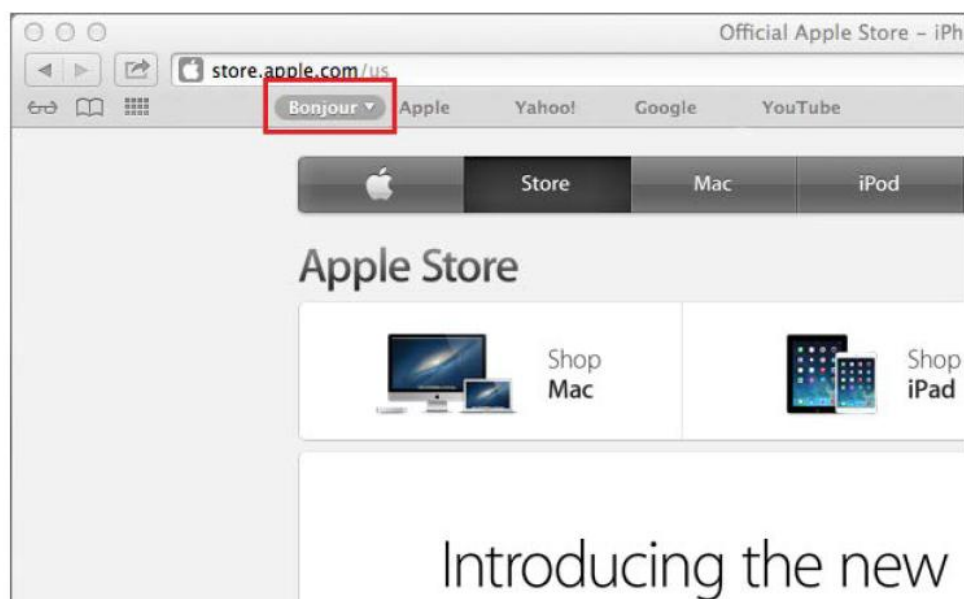
button and locate the file. Once you have located the firmware file, click **Upload** to commence the upgrade process.

Warning: Do not turn off your mydlink Baby Camera during this process. It is recommended that this process is only carried out while the camera is connected directly to a power outlet using the supplied power adapter.

8. How do I manually upgrade the firmware on my mydlink Baby Camera using a computer with a Mac operating system?

Note: Before carrying out this procedure, please ensure that the computer you are using is connected to the same wireless network as your mydlink Baby Camera.

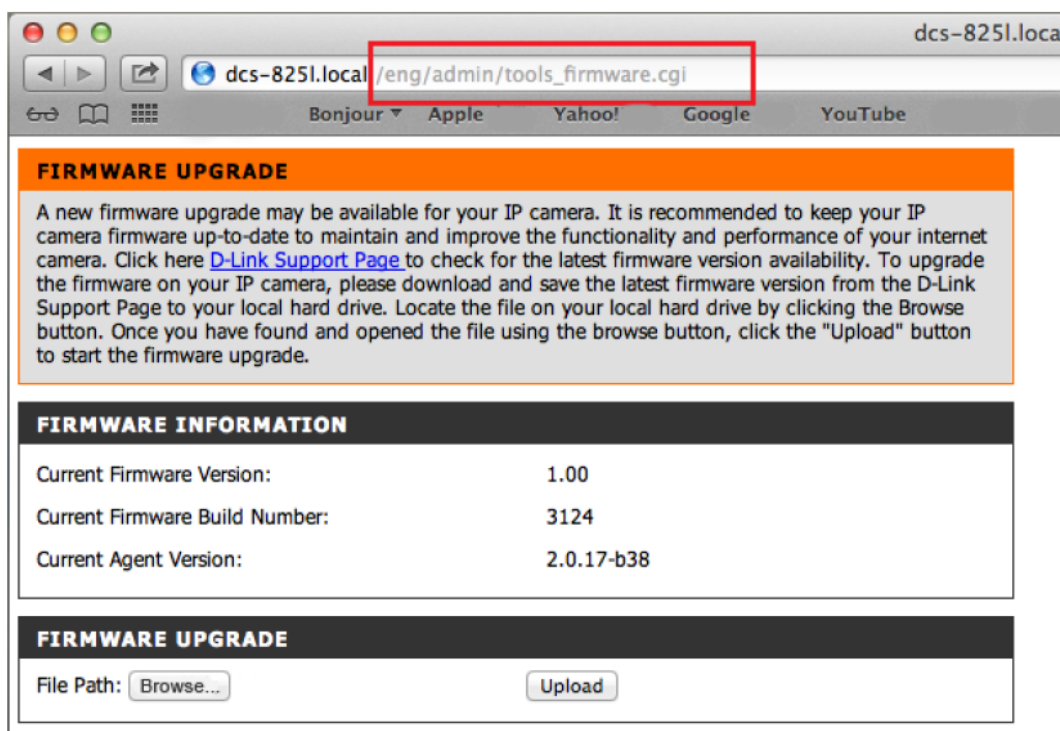
Step 1: Open Safari, and click the Bonjour button which is located below the address bar.



Step 2: Select DCS-825L as the device you want to perform the firmware upgrade on.



Step 3: Add “/eng/admin/tools_firmware.cgi” to the address currently in the address bar and press Enter.



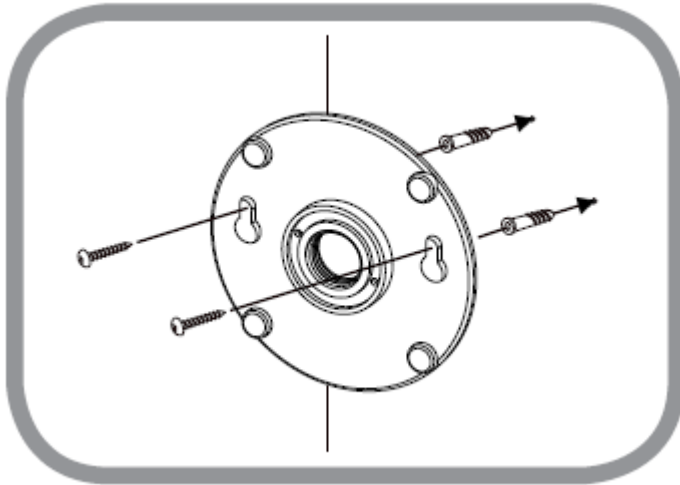
Step 4: If you do not already have the firmware file to use, follow the instructions on this page to download the latest file from the D-Link Support Page. Then click the **Browse...** button and locate the file. Once you have located the firmware file, click **Upload** to commence the upgrade process.

Warning: Do not turn off your mydlink Baby Camera during this process. It is recommended that this process is only carried out while the camera is connected directly to a power outlet

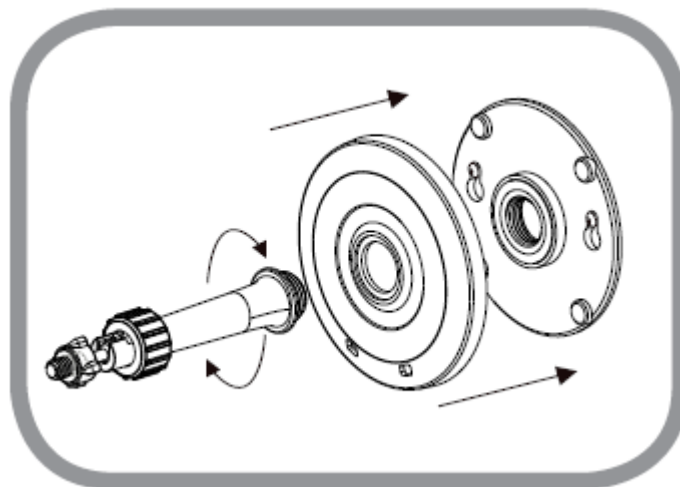
using the supplied power adapter.

9. How do I mount my camera to a wall or ceiling?

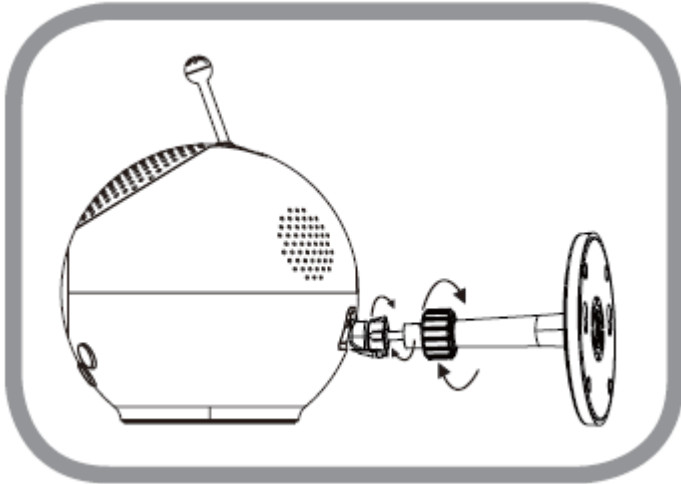
Step 1: Hold the included mounting base where you want to position the camera and use a pencil to mark the holes. Use a 6mm drill bit to drill both holes at least 30mm deep. Use a mallet to insert the wall anchors into the holes. Place the mounting base over the holes that are in the wall. Make sure to align the mounting base holes with the holes in the wall and then use the supplied screws to attach the mounting base to the wall.



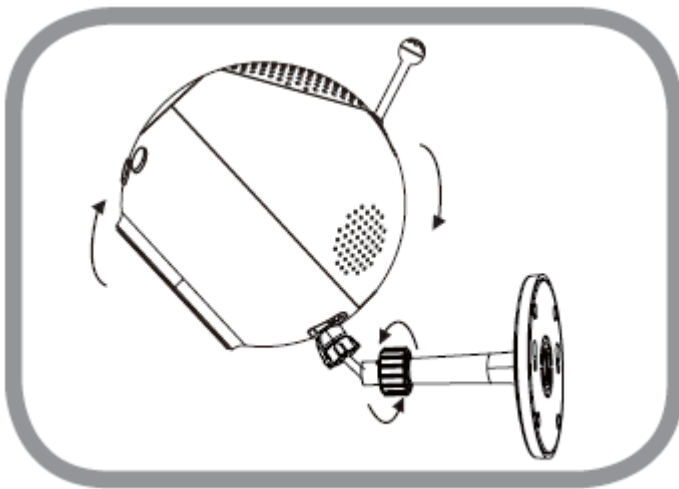
Step 2: Place the base cover over the mounting base and screw the camera stem into the mounting base.



Step 3: Loosen the collar on the camera stem and then screw the camera stem into the bottom of the camera. Turn the securing wheel to ensure the connection to the camera is snug.



Step 4: Adjust the angle of the camera as desired and then tighten the collar on the camera stem to lock it in place.



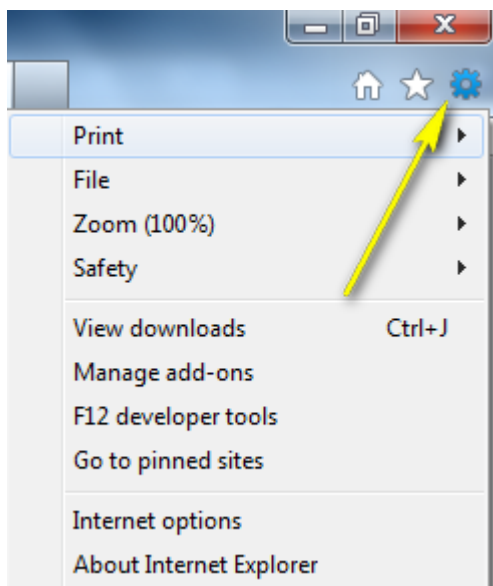
10. How do I configure Internet Explorer® to allow ActiveX Controls?

Your browser may require ActiveX controls to be allowed in order to view live video using

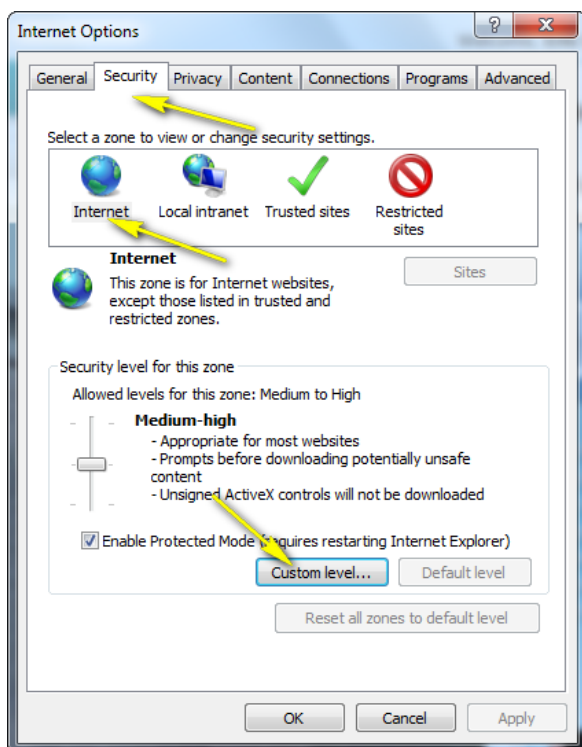
the mydlink Portal. If ActiveX is required, please follow these steps.

Step 1: Open Internet Explorer browser.

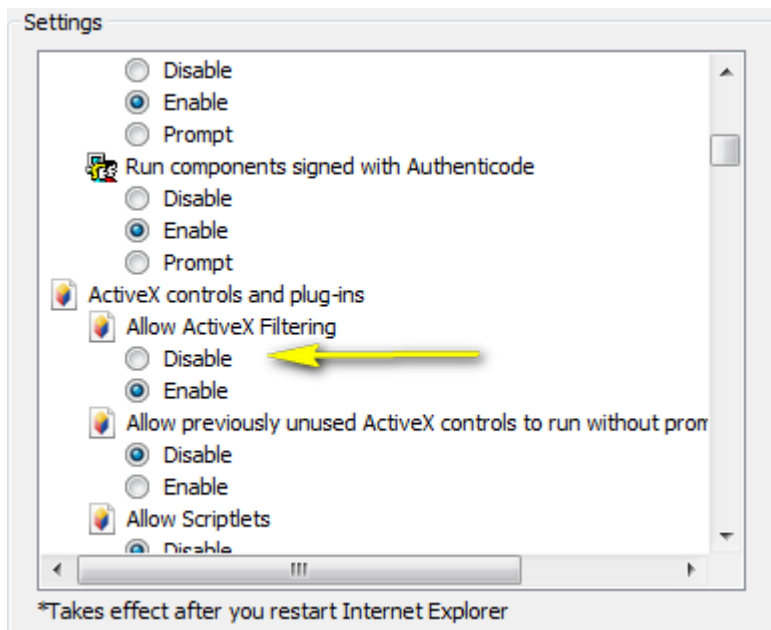
Step 2: Click the Settings icon and then Internet Options.



Step 3: Click on the Security tab, select Internet, then click on the **Custom Level...** button.



Step 4: Ensure that the **Allow ActiveX Filtering** option is *Disabled*.

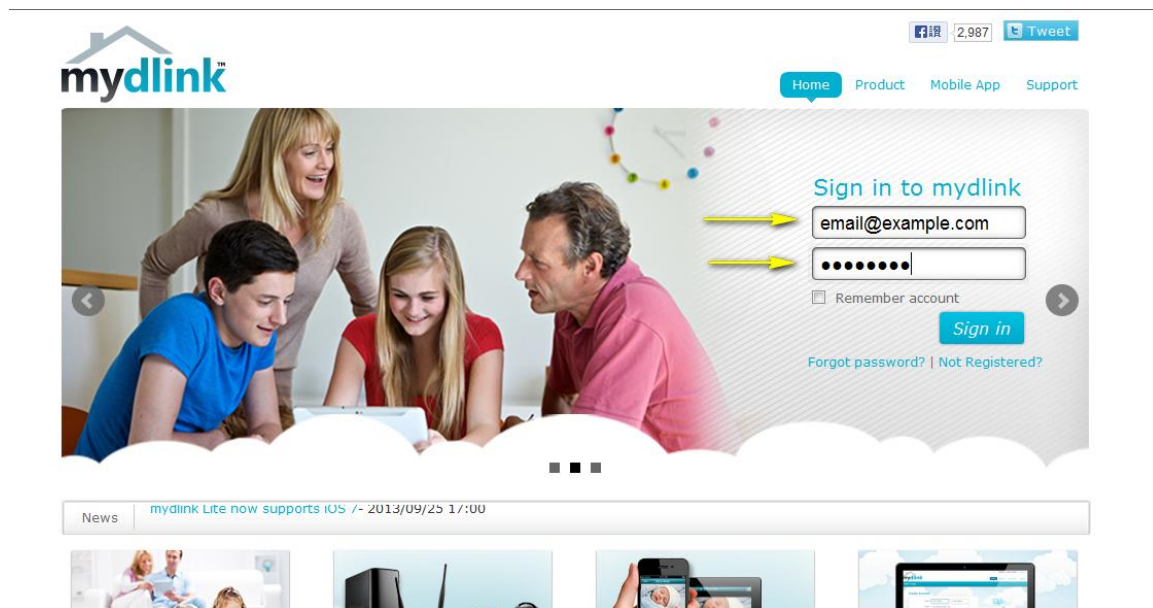


Note: Enabling settings will block your ActiveX Installation,

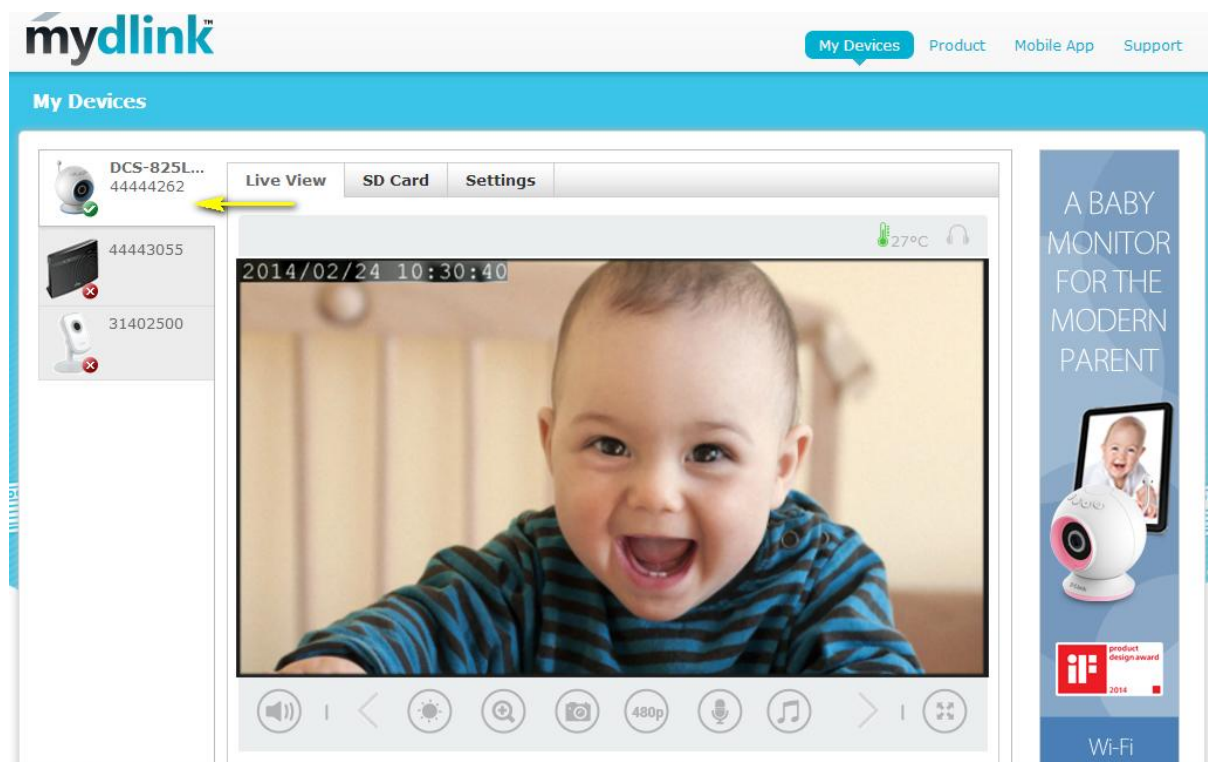
Note: If you have antivirus or firewall programs running, make sure they are not blocking ActiveX controls from being downloaded or running. Make sure that you have administrative rights before installing the ActiveX controls.

11. How do I access my Baby camera remotely by using mydlink Web Portal?

Step 1: Log in to your mydlink account at <http://www.mydlink.com>



Step 2: Select your mydlink-enabled camera to view live video.



Disclaimer: Windows and Internet Explorer are registered trademarks of Microsoft Corporation in the United States and other countries. Mac, Safari, Bonjour, iPad, and iPhone are trademarks of Apple Inc., registered in the United States and other countries.